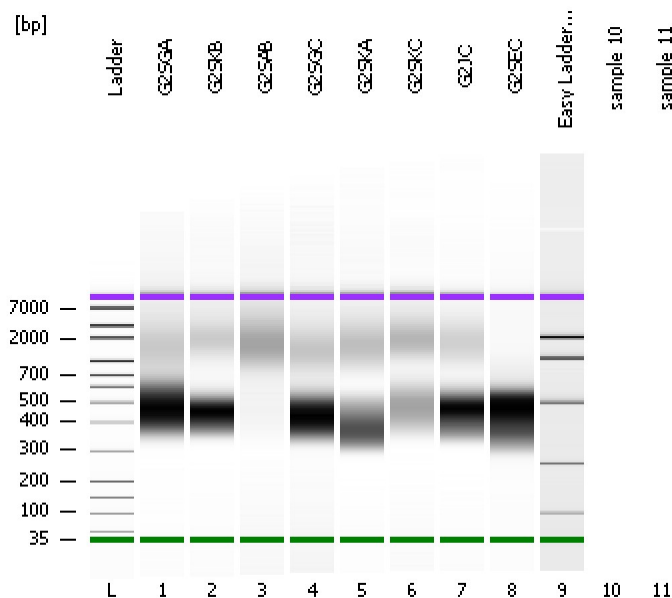


Assay Class: High Sensitivity DNA Assay
 Data Path: C:\...gh Sensitivity DNA Assay_DE20901668_2012-05-22_13-41-22.xad

Created: 5/22/2012 1:41:22 PM
 Modified: 5/22/2012 2:17:00 PM

Electrophoresis File Run Summary



Instrument Information:

Instrument Name: Bioanalyzer Firmware: C.01.069
 Serial#: DE20901668 Type: G2938B

Assay Information:

Assay Origin Path: C:\Program Files\Agilent\2100 bioanalyzer\2100 expert\assays\dsDNA\High Sensitivity DNA.xsy
 Assay Class: High Sensitivity DNA Assay
 Version: 1.03
 Assay Comments: Copyright © 2003-2010 Agilent Technologies

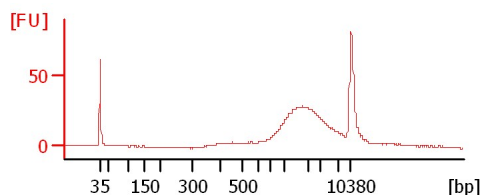
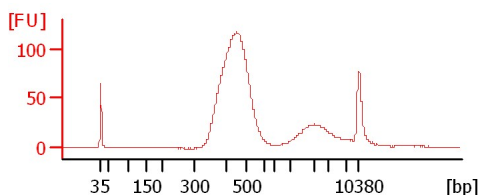
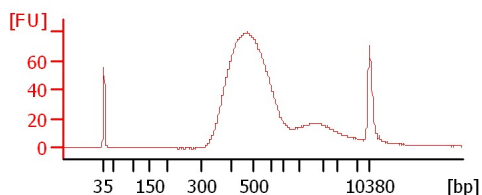
Chip Information:

Chip Lot #: Reagent Kit Lot #:
 Chip Comments:

G2SGA

G2SKB

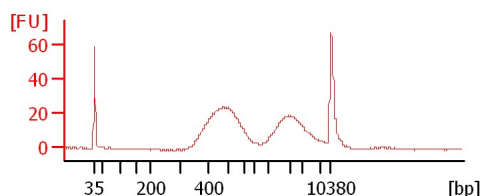
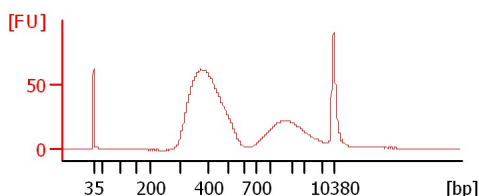
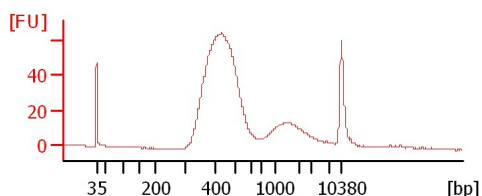
G2SAB



G2SGC

G2SKA

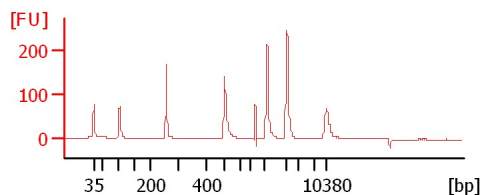
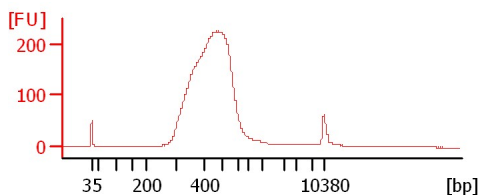
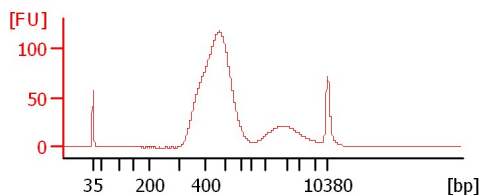
G2SKC



G2JC

G2SEC

Easy Ladder 1:50



Assay Class: High Sensitivity DNA Assay
 Data Path: C:\...gh Sensitivity DNA Assay_DE20901668_2012-05-22_13-41-22.xad

Created: 5/22/2012 1:41:22 PM
 Modified: 5/22/2012 2:17:00 PM

Electrophoresis File Run Summary (Chip Summary)

Sample Name	Sample Comment	Rest. Digest	Status	Observation	Result Label	Result Color
G2SGA		<input type="checkbox"/>	✓			
G2SKB		<input type="checkbox"/>	✓			
G2SAB		<input type="checkbox"/>	✓			
G2SGC		<input type="checkbox"/>	✓			
G2SKA		<input type="checkbox"/>	✓			
G2SKC		<input type="checkbox"/>	✓			
G2JC		<input type="checkbox"/>	✓			
G2SEC		<input type="checkbox"/>	✓			
Easy Ladder 1:50		<input type="checkbox"/>	✓			
sample 10		<input type="checkbox"/>				
sample 11		<input type="checkbox"/>				
Ladder		<input type="checkbox"/>	✓			

Chip Lot #

Reagent Kit Lot #

Chip Comments :

Assay Class: High Sensitivity DNA Assay
 Data Path: C:\...gh Sensitivity DNA Assay_DE20901668_2012-05-22_13-41-22.xad

Created: 5/22/2012 1:41:22 PM
 Modified: 5/22/2012 2:17:00 PM

Electropherogram Result Tables

Overall Results for sample 1 : G2SGA

Number of peaks found: 3
 Noise: 0.1
 Corr. Area 1: 1,281.3

Peak table for sample 1 : G2SGA

Peak	Size [bp]	Conc. [pg/μl]	Molarity [pmol/l]	Observations
1	35	125.00	5,411.3	Lower Marker
2	423	451.94	1,619.2	
3	450	195.04	657.2	
4	487	592.91	1,845.8	
5	10,380	75.00	10.9	Upper Marker

Region table for sample 1 : G2SGA

From [bp]	To [bp]	Corr. Area	% of Total	Average Size [bp]	Size distribution in CV [%]	Conc. [pg/μl]	Molarity [pmol/l]	Color
200	1,000	1,281.3	86	499	23.1	1,664.37	5,349.5	■

Overall Results for sample 2 : G2SKB

Number of peaks found: 4
 Noise: 0.3
 Corr. Area 1: 1,319.0

Peak table for sample 2 : G2SKB

Peak	Size [bp]	Conc. [pg/μl]	Molarity [pmol/l]	Observations
1	35	125.00	5,411.3	Lower Marker
2	454	1,246.06	4,154.8	
3	1,986	78.94	60.2	
4	2,210	61.28	42.0	
5	10,380	75.00	10.9	Upper Marker
6	12,804	0.00	0.0	

Region table for sample 2 : G2SKB

From [bp]	To [bp]	Corr. Area	% of Total	Average Size [bp]	Size distribution in CV [%]	Conc. [pg/μl]	Molarity [pmol/l]	Color
200	1,000	1,319.0	82	454	17.2	1,297.55	4,450.0	■

Overall Results for sample 3 : G2SAB

Number of peaks found: 0
 Noise: 0.3
 Corr. Area 1: 105.6

Peak table for sample 3 : G2SAB

Peak	Size [bp]	Conc. [pg/μl]	Molarity [pmol/l]	Observations
1	35	125.00	5,411.3	Lower Marker
2	10,380	75.00	10.9	Upper Marker

Region table for sample 3 : G2SAB

From [bp]	To [bp]	Corr. Area	% of Total	Average Size [bp]	Size distribution in CV [%]	Conc. [pg/μl]	Molarity [pmol/l]	Color
200	1,000	105.6	21	704	27.8	127.43	309.9	■

Overall Results for sample 4 : G2SGC

Number of peaks found: 6
 Noise: 0.3
 Corr. Area 1: 919.4

Assay Class: High Sensitivity DNA Assay
 Data Path: C:\...gh Sensitivity DNA Assay_DE20901668_2012-05-22_13-41-22.xad

Created: 5/22/2012 1:41:22 PM
 Modified: 5/22/2012 2:17:00 PM

Electropherogram Result Tables Continued ...**... Peak table for sample 4 : G2SGC**

Peak	Size [bp]	Conc. [pg/μl]	Molarity [pmol/l]	Observations
1	35	125.00	5,411.3	Lower Marker
2	413	573.03	2,101.3	
3	436	115.32	401.1	
4	451	79.62	267.7	
5	463	397.14	1,300.2	
6	1,290	34.92	41.0	
7	1,419	9.99	10.7	
8	10,380	75.00	10.9	Upper Marker

Region table for sample 4 : G2SGC

From [bp]	To [bp]	Corr. Area	% of Total	Average Size [bp]	Size distribution in CV [%]	Conc. [pg/μl]	Molarity [pmol/l]	Color
200	1,000	919.4	84	459	24.1	1,395.66	4,859.0	■

Overall Results for sample 5 : G2SKA

Number of peaks found: 3
 Noise: 0.2
 Corr. Area 1: 945.2

Peak table for sample 5 : G2SKA

Peak	Size [bp]	Conc. [pg/μl]	Molarity [pmol/l]	Observations
1	35	125.00	5,411.3	Lower Marker
2	370	366.59	1,500.9	
3	385	436.48	1,718.1	
4	1,576	77.14	74.1	
5	10,380	75.00	10.9	Upper Marker

Region table for sample 5 : G2SKA

From [bp]	To [bp]	Corr. Area	% of Total	Average Size [bp]	Size distribution in CV [%]	Conc. [pg/μl]	Molarity [pmol/l]	Color
200	1,000	945.2	77	424	28.9	905.48	3,465.7	■

Overall Results for sample 6 : G2SKC

Number of peaks found: 5
 Noise: 0.3
 Corr. Area 1: 338.7

Peak table for sample 6 : G2SKC

Peak	Size [bp]	Conc. [pg/μl]	Molarity [pmol/l]	Observations
1	35	125.00	5,411.3	Lower Marker
2	439	138.45	478.3	
3	470	57.98	187.1	
4	498	138.13	420.6	
5	1,888	63.72	51.1	
6	2,299	56.15	37.0	
7	10,380	75.00	10.9	Upper Marker

Region table for sample 6 : G2SKC

From [bp]	To [bp]	Corr. Area	% of Total	Average Size [bp]	Size distribution in CV [%]	Conc. [pg/μl]	Molarity [pmol/l]	Color
200	1,000	338.7	62	500	22.0	414.77	1,323.0	■

Overall Results for sample 7 : G2JC

Number of peaks found: 1

Assay Class: High Sensitivity DNA Assay
 Data Path: C:\...gh Sensitivity DNA Assay_DE20901668_2012-05-22_13-41-22.xad

Created: 5/22/2012 1:41:22 PM
 Modified: 5/22/2012 2:17:00 PM

Electropherogram Result Tables Continued ...

Noise: 0.2
 Corr. Area 1: 1,498.6

Peak table for sample 7 : G2JC

Peak	Size [bp]	Conc. [pg/μl]	Molarity [pmol/l]	Observations
1	35	125.00	5,411.3	Lower Marker
2	470	2,068.98	6,669.1	
3	10,380	75.00	10.9	Upper Marker

Region table for sample 7 : G2JC

From [bp]	To [bp]	Corr. Area	% of Total	Average Size [bp]	Size distribution in CV [%]	Conc. [pg/μl]	Molarity [pmol/l]	Color
200	1,000	1,498.6	86	464	19.7	2,200.18	7,470.7	■

Overall Results for sample 8 : G2SEC

Number of peaks found: 3
 Noise: 0.2
 Corr. Area 1: 3,929.4

Peak table for sample 8 : G2SEC

Peak	Size [bp]	Conc. [pg/μl]	Molarity [pmol/l]	Observations
1	35	125.00	5,411.3	Lower Marker
2	465	3,256.55	10,611.5	
3	475	1,984.53	6,332.4	
4	10,380	75.00	10.9	Upper Marker
5	12,290	0.00	0.0	

Region table for sample 8 : G2SEC

From [bp]	To [bp]	Corr. Area	% of Total	Average Size [bp]	Size distribution in CV [%]	Conc. [pg/μl]	Molarity [pmol/l]	Color
200	1,000	3,929.4	97	451	21.5	5,572.24	19,816.5	■

Overall Results for sample 9 : Easy Ladder 1:50

Number of peaks found: 6
 Noise: 0.2
 Corr. Area 1: 346.8

Peak table for sample 9 : Easy Ladder 1:50

Peak	Size [bp]	Conc. [pg/μl]	Molarity [pmol/l]	Observations
1	33	0.00	0.0	
2	35	125.00	5,411.3	Lower Marker
3	101	152.71	2,287.1	
4	257	153.24	901.7	
5	498	170.37	518.9	
6	1,131	173.05	231.8	
7	2,043	165.16	122.5	
8	10,380	75.00	10.9	Upper Marker

Region table for sample 9 : Easy Ladder 1:50

From [bp]	To [bp]	Corr. Area	% of Total	Average Size [bp]	Size distribution in CV [%]	Conc. [pg/μl]	Molarity [pmol/l]	Color
200	1,000	346.8	37	441	34.7	379.98	1,602.0	■