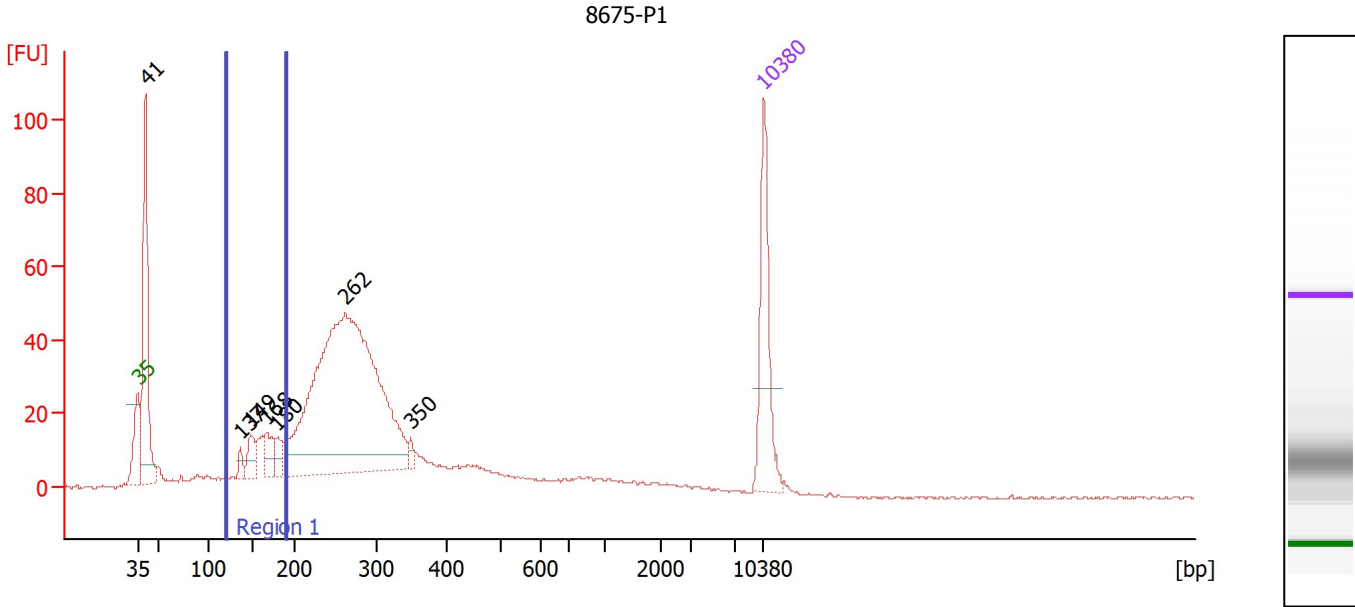


Assay Class: High Sensitivity DNA Assay
 Data Path: C:\...gh Sensitivity DNA Assay_DE04103523_2023-11-03_13-50-13.xad

Created: 3/11/2023 1:50:12 p.m.
 Modified: 3/11/2023 4:09:42 p.m.

Electropherogram Summary



Overall Results for sample 11 : 8675-P1

Number of peaks found: 7 Corr. Area 1: 117.7
 Noise: 0.3

Peak table for sample 11 : 8675-P1

Peak	Size [bp]	Conc. [pg/μl]	Molarity [pmol/l]	Observations
1	35	125.00	5,411.3	Lower Marker
2	41	216.74	8,070.4	
3	137	11.10	122.9	
4	149	26.75	271.6	
5	168	29.79	268.7	
6	180	18.48	155.7	
7	262	630.12	3,638.4	
8	350	7.46	32.3	
9	10,380	75.00	10.9	Upper Marker

Region table for sample 11 : 8675-P1

From [bp]	To [bp]	Corr. Area	% of Total	Average Size [bp]	Size distribution in CV [%]	Conc. [pg/μl]	Molarity [pmol/l]	Color
122	191	117.7	11	163	10.5	162.42	1,531.4	Blue